

Department of Radiology



**Mount
Sinai**

Radiology Vice Chairs and Site Chairs



Corey Eber, MD
*Vice Chair of Operations
(COO)*



Robert Lookstein, MD
*Vice Chair of
Interventional Radiology
(CTO)*



Bradley Delman, MD
*Vice Chair of Quality
Improvement and
Performance (CQO)*



David Mendelson, MD
Vice Chair of Informatics



John Hart, MPA
*Vice Chair of
Administration*



Zahi Fayad PhD
*Vice Chair of
Research (CRO)
and Director of
Translational and
Molecular Imaging
Institute (TMII)*



Kathleen Halton, MD
*Vice Chair of Training
Programs*



Alexander Kagen, MD
*Site Chair at
Mount Sinai St. Luke's
and Mount Sinai West*



Barbara Zeifer, MD
*Site Chair at
Mount Sinai Beth Israel
and Mount Sinai Brooklyn*



Darren Fitzpatrick, MD
*Site Chair at
Mount Sinai Queens
and Mount Sinai Doctors
Brooklyn Heights*

Introduction



Burton P. Drayer, MD

*Dr. Charles M. and Marilyn Newman
Professor and System
Chairman, Department
of Radiology, and
Dean for Clinical Affairs,
Icahn School of
Medicine at Mount Sinai*

The Mount Sinai Department of Radiology has been a leader in innovative imaging techniques for more than 80 years. An integral part of the Mount Sinai tradition has been our commitment to provide the highest quality patient care using the most advanced medical and technological expertise. Upon this same foundation of excellence, Mount Sinai has expanded its radiology imaging services to convenient locations throughout the tri-state area. Each practice

offers advanced imaging technology for accurate and rapid diagnosis and treatment. Patients are welcomed to a warm environment designed for their comfort.

We strive to provide quality clinical care and service while fostering high standards of excellence in teaching and research. Our state-of-the-art equipment allows us to provide first-rate services using the latest technology. Using the utmost skill and compassion, our nurses and technologists ensure the safety and comfort of patients. Our renowned radiologists skillfully and accurately interpret and distribute results in a timely fashion using advanced PACS (picture archiving and communication system) and reporting technology.

Our physician radiologists include world-respected subspecialists in every area of disease diagnosis, disease prevention, and innovative therapeutics. This

includes Neuroradiology, Interventional Radiology and Therapeutics, CT, MRI, Ultrasound Imaging, Digital Mammography, Diagnostic and Musculoskeletal Radiography, Bone Densitometry, Head and Neck imaging, Pediatrics, Molecular Imaging, PET scanning and Nuclear Medicine. The Department of Radiology is staffed by an experienced team of specially trained certified technologists and registered nurses. Each were selected to meet the Health System's high standards for imaging personnel.

Our well-trained scheduling and registration team provides each patient with efficient and personalized service, arranging all imaging needs with courtesy and ease.

Skilled in patient safety, the Department of Radiology is a leader in the use of low-dose radiation techniques, alleviating patient concerns about the long term effects of radiation. We also adhere to the latest recommendations in MRI and nuclear isotope safety. We take patient feedback seriously. Each patient encounter is an opportunity to learn and improve.

Under the leadership of Burton P. Drayer, MD, the Department of Radiology has made enormous strides in advancing the application of imaging technology. The Department continues to achieve clinical and educational excellence, propel innovative research and development, and improve patient-centered service and optimized communication through digital platforms.

Abdominal Imaging

Abdominal Imaging provides specialized exams such as hysterosonograms, CT and MRI to diagnose diseases of the abdomen and pelvis. We provide cutting edge exams including, fat and iron quantification methods, MRI of the bowel and colon (MR enterography), MRI of the pelvic floor, rectum, and sphincter (MR defecography), MRI of the prostate, and MR elastography (an imaging procedure used to assess the degree of liver damage). Our radiologists have extensive experience performing image guided percutaneous needle biopsies.

We evaluate both inpatients and outpatients with a wide range of pathology. Patients are referred to us across almost all medical specialties. Our state-of-the-art equipment includes the latest CT and MRI technology—including dual energy CT, high field MRI systems, and fast MR gradient—and provides fast, high quality exams, resulting in rapid and accurate diagnoses.

We aim to produce the highest quality exams. We tailor all findings to the specific diagnosis of each individual patient, and provide insightful and timely interpretations to the appropriate referring physician. Our Abdominal Imaging Division participates in teaching, translational research and interdisciplinary conferences, attending and presenting at both national and international conferences.



Chest Imaging

Mount Sinai is continuously expanding and improving patient care in New York City. Our recent partnership with the National Jewish Health system and the creation of the Mount Sinai-National Jewish Health Respiratory Institute has fostered exciting advances in interstitial lung disease characterization and treatment options. Leaders in the field of pulmonary medicine, pathology, and chest radiology, work closely via multi-disciplinary conferences.

Pioneers in the field of lung cancer screening using CT scans, Mount Sinai radiologist oversee a top clinical early detection program. Because of our internationally recognized cardiothoracic imaging program, Mount Sinai Radiology is a leading center for diagnostic lung biopsy and other minimally invasive techniques for evaluating lung nodules.

With our sophisticated Translational and Molecular Imaging Institute (TMII), Mount Sinai is a leader in molecular imaging fields. In addition, because of our joint imaging program with the Mount Sinai Cardiovascular Institute, we provide unique training for our residents and fellows in both lung and heart imaging. We are home to one of the most advanced cardiothoracic and pulmonary surgical and oncologic centers in the New York metropolitan area.



Waiting Room in the Leon and Norma Hess Center for Science and Medicine

Patients are imaged at the beautiful state-of-the-art Hess Center, which houses the most advanced MRI Units, CT scanners, and PET-CT/MRI systems in the world.

Emergency Imaging

As a major academic center and New York City's largest health care provider, Mount Sinai is proud to offer in-house 24-hours a day, 365 days a year, prompt attending level reads on all adult and pediatric ER patients and all inpatients requiring emergency or urgent radiological imaging.

Emergency imaging provides high quality, expedient, final readings to achieve the best patient care and outcomes. Our division interprets x-rays, ultrasonography, CTs and MRIs that are performed throughout the emergency rooms across the Mount Sinai Health System.

Since 2014, we have successfully managed this role without any gaps in coverage. Overnight, three attendings provide sub-specialty experience and supervise residents and fellow trainees. Our Emergency Imaging Division works closely with all Mount Sinai Health System Emergency physicians, Surgeons, OB/GYNs, Neurologists, Internists and Pediatricians, to provide our patients with stellar, team-based care.

In addition to offering the highest quality clinical care, our staff physicians are leaders in the field of medicine – providing education to our world-renowned medical school and lecturing locally and internationally. We continually strive to develop standards of care, educational training, and cutting-edge research in Emergency Radiology.



Musculoskeletal Imaging



Musculoskeletal imaging and procedures at the Mount Sinai Health System combine clinical expertise with the newest technology to provide diagnostic imaging and therapeutic procedures for bones, joints, and soft tissues. Working closely with colleagues in other disciplines, including orthopedics, rheumatology, and rehabilitation medicine, our musculoskeletal radiologists offer a wealth of experience in imaging tests ranging from ultrasound to MRI arthrography and procedures ranging from therapeutic injections to biopsies.

Our service provides a broad and highly specialized range of orthopedic imaging services including dual-energy CT, dedicated extremity MRI, cartilage sensitive MRI, imaging of joints with metallic prostheses and PET-MRI. In addition, our division provides imaging services for the US Open Tennis Championships which include CT, MRI and onsite ultrasound examination in order to rapidly pinpoint, diagnose, and treat the sports-related injuries of world-class athletes.

We partner with referring physicians to deliver the highest quality information in the diagnosis and treatment of various conditions, ensuring our patients experience the best outcomes.

Breast Imaging

According to the American Cancer Society, one in eight women will be diagnosed with breast cancer in their lifetime. Early detection is key, and the primary focus of the Breast Imaging Division.

Dedicated to clinical excellence, innovation, research, and teaching; Mount Sinai's breast imagers use mammography, ultrasound, MRI, molecular breast imaging, and an active breast interventional practice which includes biopsies and localizations. Our imagers, radiologists, technical, and support staff strive to create a pleasant and comfortable patient experience.

Constant innovation and an unwavering commitment to breast imaging excellence are evident throughout the breast imaging division. The Dubin Breast Center of the Tisch Cancer Institute at Mount Sinai was the first in New York City to offer Digital Breast Tomosynthesis (3D mammography). The Dubin Breast Center offers radioactive seed localization as an alternative to wire localization. Molecular breast imaging, a novel way of viewing the metabolic activity of abnormal breast tissue, is available at our Mount Sinai Downtown- Chelsea Center campus.

The Breast Imaging Division is dedicated to advances and optimal performance in the field. The Division has recently published studies in prestigious medical journals. Among the many avenues of study, our doctors seek to better understand breast vascular calcification as a

harbinger of cardiac risk, the risk factors for breast cancer in men and transgender females, and the appearance of breast disease on chest CT. Through continuing education and certifications, our staff strives for professional excellence.

With our commitment to improving the quality of breast imaging for our patients, comes the need to provide top training for the next generation of breast imagers both in the United States and abroad. During Breast Cancer Awareness Month, radiologists from around the world attend the Mount Sinai Breast Imaging Update. Members of our division volunteer to assess quality of mammography and breast ultrasound for the American College of Radiology's accreditation programs, have been selected as fellows of the American College of Radiology, and have been honored by the American Cancer Society and the Breast Health Resource Program.

Our radiologists collaborate with colleagues in medicine, breast surgery, breast oncology, radiation therapy, breast pathology, social work, massage therapy, and psychology to offer the highest quality coordinated care that enhances patient care and improves early cancer detection.

As one of the largest breast imaging practices in the New York metropolitan area, we are honored to serve our diverse community with high quality, compassionate care.



Mount
Sinai

Dubin Breast Center
of the Tisch Cancer Institute

Dr. Laurie Margolis
Chief Breast Imaging

17
Laurie Margolis, MD

Interventional Radiology

Interventional Radiology is a subspecialty of Radiology that involves using revolutionary, minimally invasive techniques to treat multiple diseases that were previously treated with more invasive surgery.

Interventional radiologists treat damaged or blocked arteries and veins throughout the body, provide treatment—and in many instances cure—many types of cancer, and treat various conditions from chronic back pain to uterine fibroids. In addition, interventional radiologists evaluate new treatments for diseases of the prostate and even obesity.

Interventional Radiology is the only medical subspecialty recognized by the American Board of Medical Specialties solely focused on minimally invasive, image guided therapies.

Our radiologists perform approximately 10,000 image-guided procedures each year. Physicians across the country and around the world come to Mount Sinai to learn our innovative techniques for treating a spectrum of diseases. For example, our team developed and refined minimally invasive treatments for limb ischemia, deep vein thrombosis, liver and kidney cancer, uterine fibroids and bleeding associated with pregnancy.

Our division collaborates with physicians and practitioners across the Health System. We have integrated practices with medical and surgical specialties at each Mount Sinai hospital to ensure simple, convenient access for our patients.





Neuroradiology, a subspecialty of Radiology, focuses on evaluation of the brain, spine, and head and neck through MRI and CT imaging.

The Division of Neuroradiology employs highly experienced Neuroradiologists, many of whom are international leaders in the field. Our Neuroradiologists are board certified radiologists who have undergone rigorous subspecialized training, earning a Certificate of Added Qualification (CAQ) in Neuroradiology from the American Board of Radiology. The Division of Neuroradiology provides the highest level of medical care through state-of-the-art imaging and proficiency in imaging of the brain, spine, and head and neck.

Brain

We evaluate a wide variety of diseases of the brain including stroke, brain tumors, multiple sclerosis, cancer metastasis, and more. We are among the leading group of Neuroradiologists in the country utilizing Advanced Imaging techniques in routine practice to help in the diagnosis and follow-up evaluation of stroke and brain tumors. We apply the latest imaging software available to create the highest quality studies and provide data for treatment and surgical navigation.

Spine

Neuroradiologists at Mount Sinai provide expertise in imaging of the spine, using the latest CT and MRI scanners to provide top imaging and interpretation to our Orthopedic and Neurosurgery Spine Surgeons, Myeloma Specialists, Oncologists, and other medical experts. Several of our Neuroradiologists provide interventional expertise in the performance of spinal procedures such as spine biopsy, kyphoplasty and vertebroplasty, spinal tumor ablation therapy, and spinal pain injections.

Head and Neck

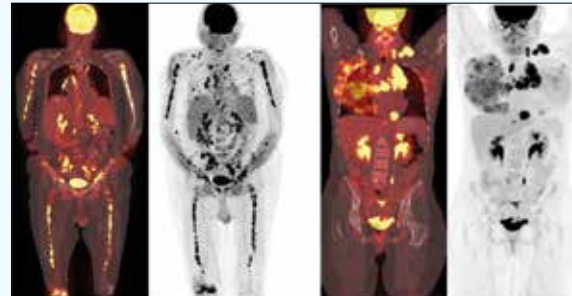
We also provide dedicated expertise in the field of Head and Neck imaging to evaluate diseases related to the eyes, the ears, the nose, and the throat. Our Head and Neck radiologists are among the pioneers in the field and author the major textbook in the field that is utilized throughout the world. They work closely with ENT Surgeons to diagnose and treat diseases of the head and neck and perform many advanced imaging techniques that are offered at few centers nationally. Mount Sinai is also a center for image-guided Head and Neck procedures with many complex biopsies performed each year.

Nuclear Medicine



Nuclear Medicine and Molecular Imaging provide structural as well as functional information at the cellular and molecular level to identify and treat various disorders. Evaluation of physiological processes is critical to diagnose disease at an early stage, to provide effective personalized management, and to monitor effectiveness of individualized treatments.

The Division of Nuclear Medicine and Molecular Imaging at the Icahn School of Medicine



at Mount Sinai encompasses a broad program of established nuclear medicine procedures and research activities with a state-of-the-art imaging center as well as a facility that accommodates treatment with radioactive molecules. We utilize the most sophisticated imaging equipment including PET-CT at multiple sites and PET-MRI at our Hess clinical and developmental facility on the Upper East Side of Manhattan. The Division collaborates with all medical specialties to provide expertise in a full range of individualized imaging examinations. Our primary mission is to give superior service to patients and clinicians by accurately diagnosing and characterizing disease processes for rendering best possible management.

Pediatric Radiology

Pediatric Radiology at the Kravis Children's Hospital at Mount Sinai provides comprehensive state-of-the-art imaging services for premature infants, full-term infants, children, adolescents, and young adults (through 21 years of age).

Our experienced internationally known pediatric radiologists work closely with referring physicians to determine which imaging study is most appropriate for evaluation of a given clinical problem. Whenever possible, imaging studies that do not require radiation exposure, such as ultrasound or MRI, are explored first. When it is necessary for a child to be examined with an imaging modality that requires radiation exposure, such as plain film radiography, fluoroscopy, CT, Nuclear Medicine, or Interventional Radiology, the lowest possible doses are used.

The main Pediatric Radiology area is decorated with a beautiful underwater theme, designed to reduce anxiety and provide comforting distraction for patients and their families. Prior to and during imaging studies, patients can watch a video or play with a Gameboy. Afterward, they are rewarded with lollipops and stickers, turning a potential scary experience into one that is fun and friendly. Younger patients receive their own copy of the Kravis Children's Hospital at Mount Sinai Pediatric Radiology coloring book prior to imaging procedures. Many are excited to recognize the members of staff caricatured within.



Diagnostic Capabilities and Resources - Number of Units

1 PET/MRI Integrated scanner	1 Unified System-wide PACS
24 Nuclear Medicine scanners	4 PET/CT scanners
28 Multislice Advanced CT scanners	23 High field (1.5, 3.0 and 7.0 Tesla) MRI systems
41 Fluoroscopic machines	14 Interventional Radiology Angiographic suites
3 Stereotactic Breast Biopsy units	23 Digital Mammography units
65 Diagnostic X-ray units	50 Quality Ultrasound systems
	6 Bone Densitometry scanners



**Mount
Sinai**

To schedule an office visit with one of our physicians please call: **212-241-8333**
www.mountsinai.org/radiology

1 The Mount Sinai Hospital
1468 Madison Avenue
New York, NY 10029

Radiology Associates
Klingenstein Pavillion
1176 Fifth Avenue, MC Level
New York, NY 10029

Radiology Associates
*Leon and Norma Hess Center
for Science and Medicine*
1470 Madison Avenue
SC2 Level
New York, NY 10029

**Mount Sinai Center
for Advanced Medicine**
17 East 102nd Street
Suite 6D
New York, NY 10029

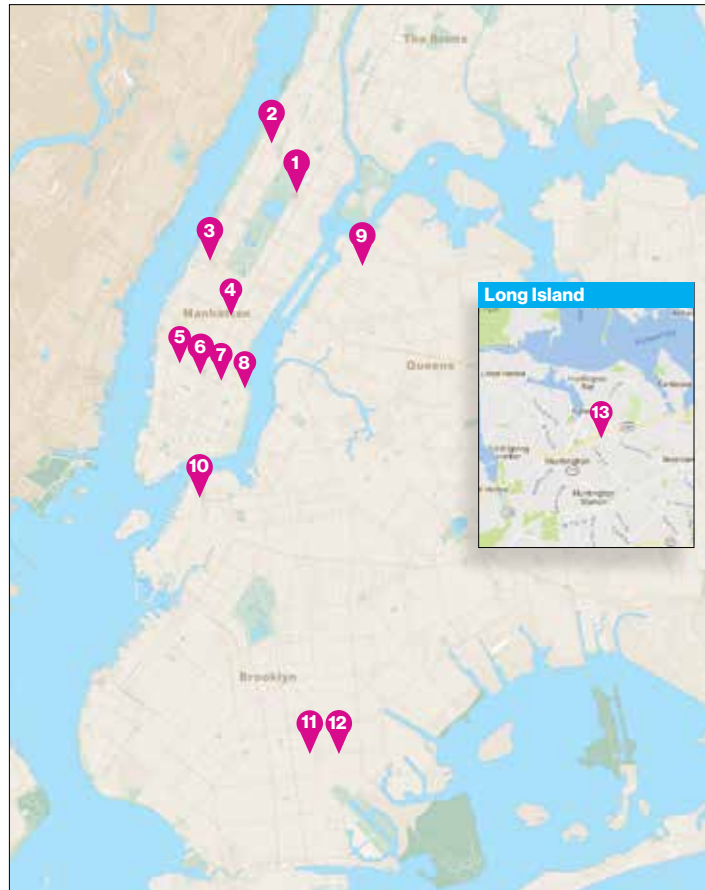
2 Mount Sinai St. Luke's
1111 Amsterdam Avenue
3rd Floor
New York, NY 10025

3 Mount Sinai West
1000 Tenth Avenue
4th Floor
New York, NY 10019

Radiology Associates West
425 West 59th Street
Suite 6C
New York, NY 10019

**4 Mount Sinai Doctors-
34th Street**
55 East 34th Street
4th Floor
New York, NY 10016

**5 Mount Sinai Downtown-
Chelsea Center**
325 West 15th Street
New York, NY 10011



**6 Mount Sinai Downtown-
Union Square**
10 Union Square East
New York, NY 10003

**7 New York Eye and Ear
Infirmary of Mount Sinai**
310 East 14th Street
New York, NY 10003

8 Mount Sinai Beth Israel
281 First Avenue
2nd Floor
New York, NY 10003

9 Mount Sinai Queens
25-10 30th Avenue
2nd Floor
Astoria, NY 11102

**10 Mount Sinai Doctors
Brooklyn Heights**
300 Cadman Plaza West
18th Floor
Brooklyn, NY 11201

11 Mount Sinai Brooklyn
3201 Kings Highway
Brooklyn, NY 11234

**12 Kingsway Diagnostic
Imaging**
3131 Kings Highway
Suite A4
Brooklyn, NY 11234

**13 Mount Sinai Doctors
Long Island**
325 Park Avenue
Huntington, NY 11743

120 New York Avenue
Huntington, NY 11743